

LONG RANGE OUTLOOK



Cape Breton-Victoria
Regional Centre for Education
cbvrce.ca

September 2023



General Description

The Cape Breton-Victoria Regional Centre for Education is a vast area, encompassing urban and rural settings in two municipalities – Cape Breton Regional Municipality and Victoria County and covers approximately 3,238 square kilometers. The Cape Breton-Victoria Regional Centre for Education had 12664 students in 38 sites in September 2022.

Mission Statement

We aim to inspire success, confidence and hope in each student to enable them to achieve their full potential.

Historical Context

The Cape Breton-Victoria Regional Centre for Education (then the Cape Breton-Victoria Regional School Board) published its Long Range Outlook (LRO) in April 2015. The original LRO was informed by a 2 ½ year public consultation “Looking Inward”.

In 2016, the elected Board voted to close 17 schools. The total number of schools closed between 2016 and 2019 was 13. Two of the original 17 are scheduled for replacement and two others remained open as a result of the province purchasing all P3 schools.

On April 1, 2018, the governance model for the former Cape Breton-Victoria Regional School Board was changed, with the elimination of the elected school board. The Cape Breton-Victoria Regional Centre for Education was then formed.

A provincial Pre-primary program was introduced in 2017, and fully implemented in 2020. Grade levels in the CBVRCE are now from Pre-Primary to Grade 12.

This 2023 update of the LRO reflects the changes which have resulted in recent years which includes population growth after decades of enrollment decline.

Demographics

Enrollments & Projections:			Previous (2012-21)			Current (2022)			Projection: (2023-32)**		
Year:	2012	2013	2014	2015	2016	2017	2018	2019	2020	2021	2022
Enrollment:	13977	13513	13177	12822	12680	12476	12578	12668	12413	12496	12664
Year:	2023	2024	2025	2026	2027	2028	2029	2030	2031	2032	
Enrollment:	12656	12623	12526	12322	12107	11905	11751	11553	11391	11180	

**Projections are provided by 3rd part software based on birth rate data. Immigration is not fully accounted for in projections.

Business and Regional Improvement Plans

Information related to the Centre's educational goals and priorities as well as programming can be found in the Centre's Business Plan and Regional Improvement Plan. The most recent editions can be found at the following links;

[2022-23 CBVRCE Regional Improvement Plan](#)

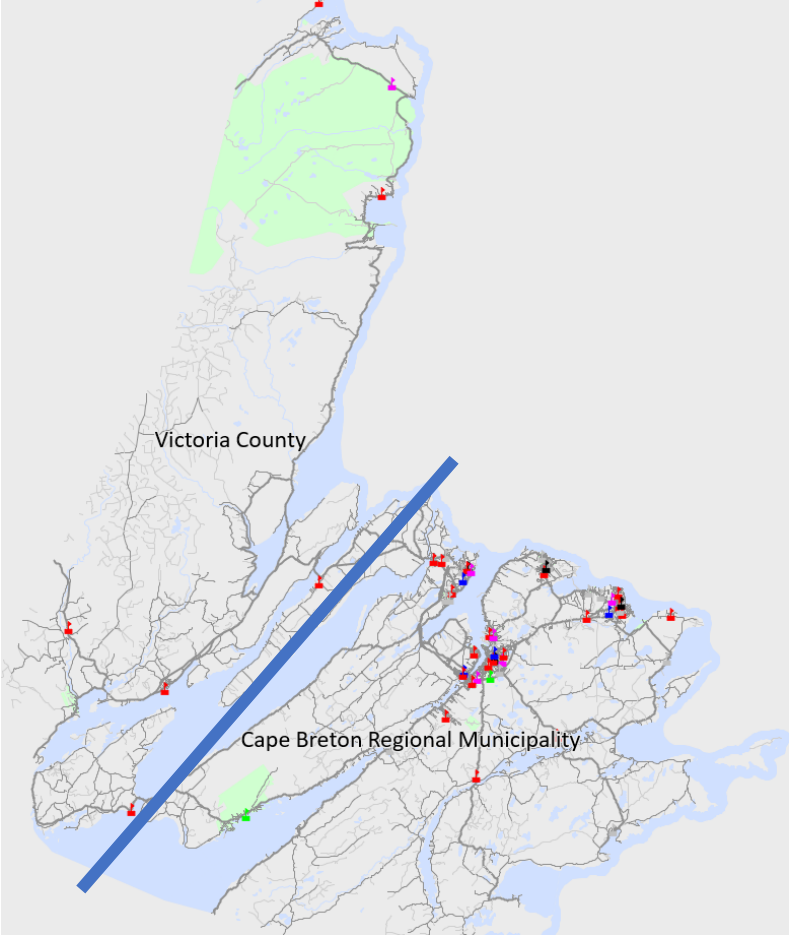
[2022-23 CBVRCE Business Plan](#)

Information regarding the Centre's Operations and Assets including Student Transportation are included in the business plan.

Click [here](#) for Information related to the Centre's Capital Projects. Major maintenance projects are included with individual school profiles.

Geography

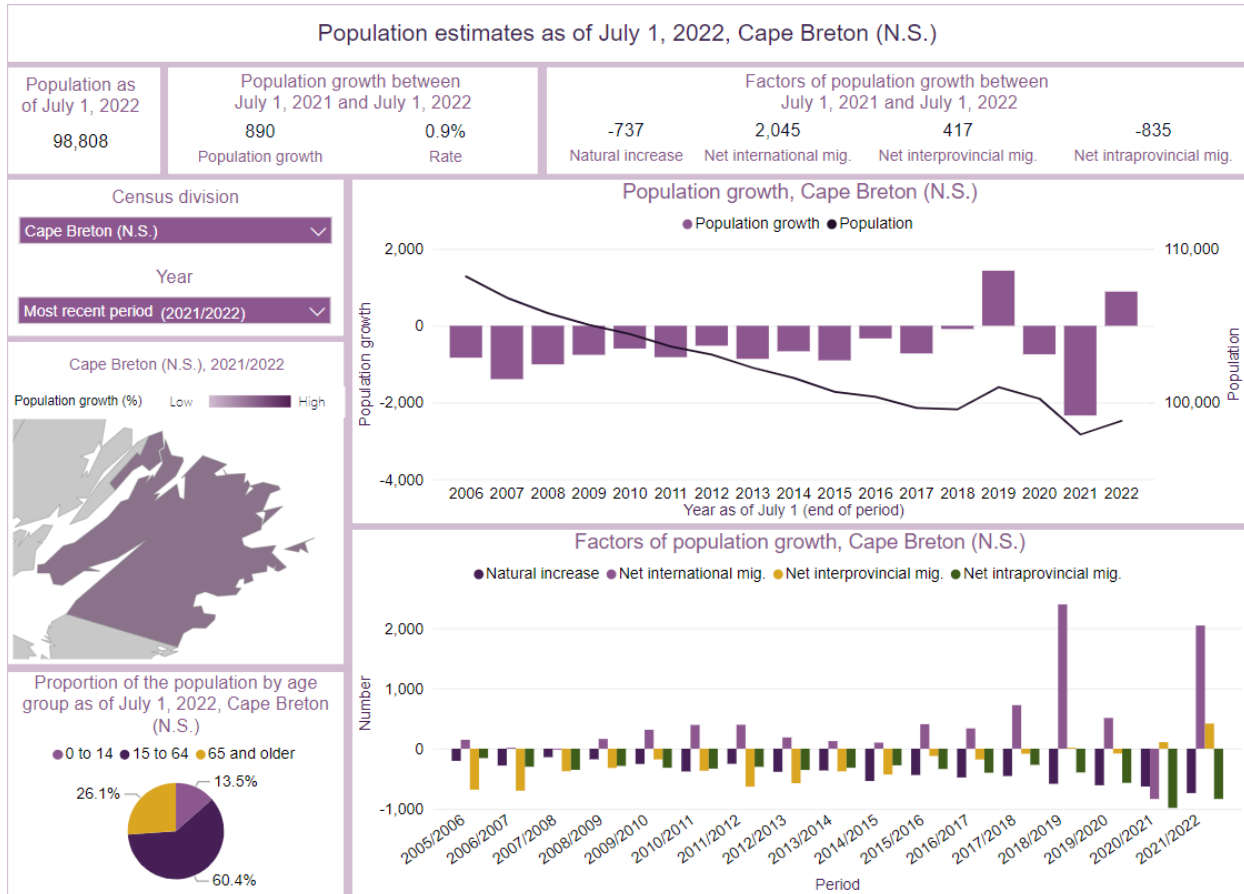
The Cape Breton-Victoria Regional Centre for Education provides educational programs and services to students in Cape Breton and Victoria Counties.



Population Trends

Current population information for Cape Breton Regional Municipality and Victoria County is available from Statistics Canada. Information includes total population, growth, age group and factors of population growth.

Interactive information can be found [here](#).



Population estimates as of July 1, 2022, Victoria (N.S.)

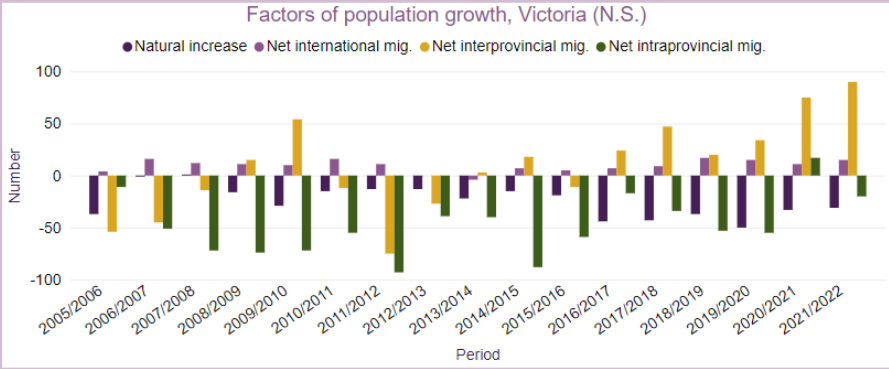
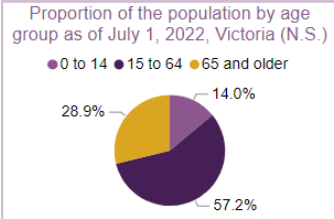
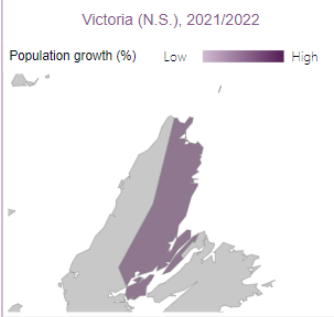
Population as of July 1, 2022	Population growth between July 1, 2021 and July 1, 2022		Factors of population growth between July 1, 2021 and July 1, 2022			
7,147	54	0.8%	-31	15	90	-20
	Population growth	Rate	Natural increase	Net international mig.	Net interprovincial mig.	Net intraprovincial mig.

Census division

Victoria (N.S.)

Year

Most recent period (2021/2022)



School Information

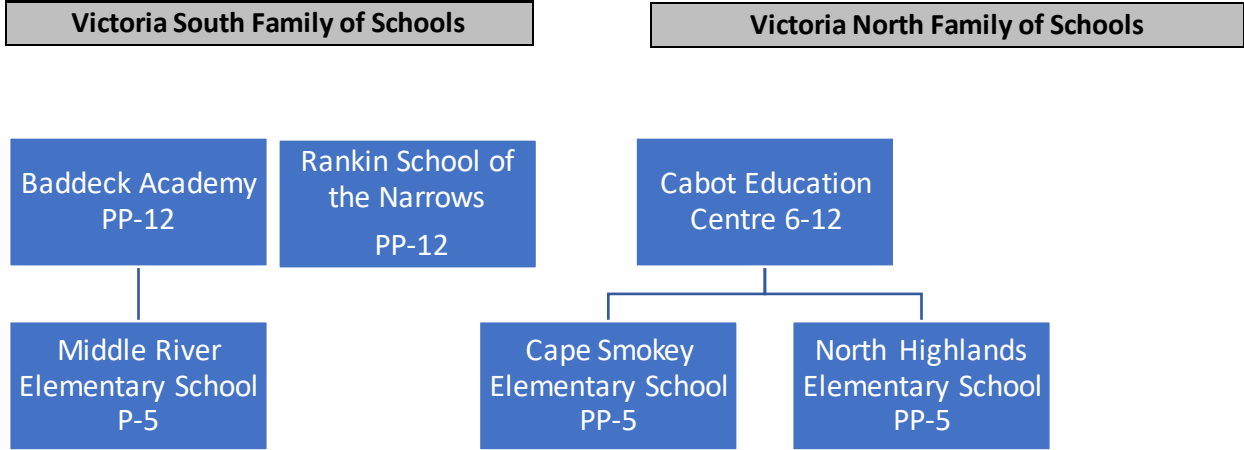
School information is provided in families of schools and the feeder systems from elementary schools to high schools. Catchment area information is provided, as well as the community/municipal context of the family of schools.

School specific data sheets are included for each school and include the following information:

- School location
- The grade configuration of the school
- Year of the construction (school building)
- Historical and projected enrollment figures
- School capacity and utilization (see definitions)
- Provincially approved addition and alteration projects, including dates completed (if applicable)
- Future considerations related to building condition
- Specific programming offered at the school (i.e., French immersion), if applicable
- Any other factors relevant to the school.

CBVRCE has seven (7) families of schools. Some of the communities each family of school service is listed below.

- Victoria South - Baddeck, Iona, Middle River, North Shore
- Victoria North - Ingonish, Neil's Harbour, Cape North, Bay St. Lawrence
- Northside – North Sydney, Sydney Mines, Florence, Bras D'Or, Boularderie
- Riverview – Coxheath, Westmount, Sydney River, East Bay, Marion Bridge, Louisbourg
- Sydney – Sydney and Whitney Pier
- New Waterford - New Waterford, River Ryan, Lingan, Scotchtown, New Victoria
- Glace Bay – Glace Bay, Reserve Mines, Dominion, Donkin, Port Morien



[Click here for Geographic Catchment Areas](#)

Community/Municipal Context:

Victoria County has seen population stabilization and growth in 2022 (0.76%) with immigration a factor in the growth.

Industries that may attribute to future growth include reopening of the Little Narrows Gypsum mine which may affect population growth in the Rankin School of the Narrows catchment, and the redevelopment of Ski Cape Smokey for all Victoria North and Baddeck catchments.

Baddeck Academy											
320 Shore Road, Baddeck, Nova Scotia, B0E 1B0											
Grade Configuration:		PP-12									
Year of Construction:		1953, 1967, 1978, 2011, 2013									
Total Floor Area (sqft):		71567									
Number of Storeys:		2									
Number of Portables:		0									
Current School Capacity:		432									
School Utilization:		68%									
Enrollments & Projections:		Previous (2012-21)				Current (2022)			Projection: (2023-32)		
Year:	2012	2013	2014	2015	2016	2017	2018	2019	2020	2021	2022
Enrollment:	263	263	249	243	248	270	300	299	294	302	313
Year:		2023	2024	2025	2026	2027	2028	2029	2030	2031	2032
Enrollment:		318	316	317	312	310	317	320	320	315	309
Specific (specialized) programming offered at the school: N/A											
Provincially approved addition and alteration projects or other major capital upgrades, including dates completed (if applicable): Baddeck Academy has benefitted from a recent Alteration and Addition project. The project included new roofing, demolition of the old high school wing, construction of a new classroom wing, new entrance, new sport field, and new mechanical plant. Recent upgrades included cafeteria refresh with upgraded ventilation.											
Information about review of the school previously conducted:											
Future considerations related to building condition: Upgrades over the next 10 years at Baddeck Academy include interior improvements which involve the replacement of VCT flooring, gymnasium floor refinishing and washroom upgrades. Upgrades to the elevator cab and controls are needed. The main switch gear, secondary switch gear, secondary panels, hot water tanks, hot water heater, humidifiers, fuel tank, boiler and split system heat pump are to be replaced. Repairs to the domestic water distribution system and the sprinkler system are required. Exterior work includes replacing the sealants on exterior walls. The EPDM, tar and gravel and modified bitumen roofs will all need replacement during this time frame. Repairs/replacement of asphalt on the driveway and parking lots are recommended.											
Any other factors relevant to the school:											



Middle River Elementary											
2248 Cabot Trail, Middle River, NS BOE 2E0											
Grade Configuration:			P-5								
Year of Construction:			1960								
Total Floor Area (sqft):			5348								
Number of Storeys:			1								
Number of Portables:			0								
Current School Capacity:			49								
School Utilization:			20%								
Enrollments & Projections:			Previous (2012-21)			Current (2022)			Projection: (2023-32)		
Year:	2012	2013	2014	2015	2016	2017	2018	2019	2020	2021	2022
Enrollment:	22	23	25	17	10	12	11	13	10	9	12
Year:		2023	2024	2025	2026	2027	2028	2029	2030	2031	2032
Enrollment:		13	13	12	12	13	12	11	12	13	13
Specific (specialized) programming offered at the school:											
Provincially approved addition and alteration projects or other major capital upgrades, including dates completed (if applicable) Roof replacement in 2016.											
Information about review of the school previously conducted: Middle River has been placed under review several times in the past. The most recent occurrences were in 2005 and 2011. In both cases, the school remained open.											
Future considerations related to building condition:											
Upgrades over the next 10 years include interior improvements such as the replacement of VCT flooring as well as interior lighting. The boiler system and main circulation pumps also need replacement.											
Exterior work includes replacing wood siding and wood framed single glazed windows. Repairs/replacement of asphalt on the driveway and parking lots are recommended.											
Any other factors relevant to the school:											



Rankin School of the Narrows											
4113 NS-223, Victoria County, NS B2C 1A4											
Grade Configuration:		PP-12									
Year of Construction:		2007									
Total Floor Area (sqft):		35000									
Number of Storeys:		1									
Number of Portables:		0									
Current School Capacity:		230									
School Utilization:		63%									
Enrollments & Projections:		Previous (2012-21)				Current (2022)			Projection: (2023-32)		
Year:	2012	2013	2014	2015	2016	2017	2018	2019	2020	2021	2022
Enrollment:	164	145	129	124	135	126	135	144	146	141	142
Year:		2023	2024	2025	2026	2027	2028	2029	2030	2031	2032
Enrollment:		144	141	137	135	128	133	131	133	131	127
Specific (specialized) programming offered at the school: Gaelic											
Provincially approved addition and alteration projects or other major capital upgrades, including dates completed (if applicable)											
Information about review of the school previously conducted: NA											
Future considerations related to building condition:											
Upgrades over the next 10 years include replacement of the fire alarm panel, emergency lighting, heat pump, hot water heater, humidifiers, hood suppression system and the above ground fuel tank.											
Exterior work includes replacing the asphalt shingle and modified bitumen roofs.											
Repairs/replacement of asphalt on the driveway and parking lots are recommended.											
Any other factors relevant to the school:											



Cabot Education Centre											
Cabot Trail, Neils Harbour, NS BOC 1N0											
Grade Configuration:		6-12									
Year of Construction:		1974, 1986, 1989									
Total Floor Area (sqft):		37000									
Number of Storeys:		2									
Number of Portables:		0									
Current School Capacity:		371									
School Utilization:		46%									
Enrollments & Projections:		Previous (2012-21)				Current (2022)			Projection: (2023-32)		
Year:	2012	2013	2014	2015	2016	2017	2018	2019	2020	2021	2022
Enrollment:	200	198	196	205	203	183	187	182	172	177	188
Year:		2023	2024	2025	2026	2027	2028	2029	2030	2031	2032
Enrollment:		187	195	182	188	200	204	193	187	179	177
Specific (specialized) programming offered at the school: Students receiving support through Learning Support Teacher (position includes primarily a High Needs Learning Center) may have complex challenges that include, but are not limited to medical/personal care, behavioral, social/emotional, communication, and/or developmental delays.											
Provincially approved addition and alteration projects or other major capital upgrades, including dates completed (if applicable) Roof replacement in 2020, Generator and MCC Replacement in 2023											
Information about review of the school previously conducted: NA											
Future considerations related to building condition:											
Upgrades over the next 10 years include replacement of VCT flooring and washroom upgrades. The emergency lighting, exit signs and battery backup, air compressor and supply pump need to be replaced. Replacement is also required for AHU components, the circulation pump and hydraulic reservoir and pump. Repairs to the boiler systems are also required. A review of the front foyer/stairwell is also required.											
Exterior work includes replacing the perimeter sealants, expansion joints and exterior doors. Repairs are needed to the wall systems. Repairs/replacement of asphalt on the driveway and parking lots are recommended. Replacement of the EPDM and BUR roof systems is also required.											
Any other factors relevant to the school:											



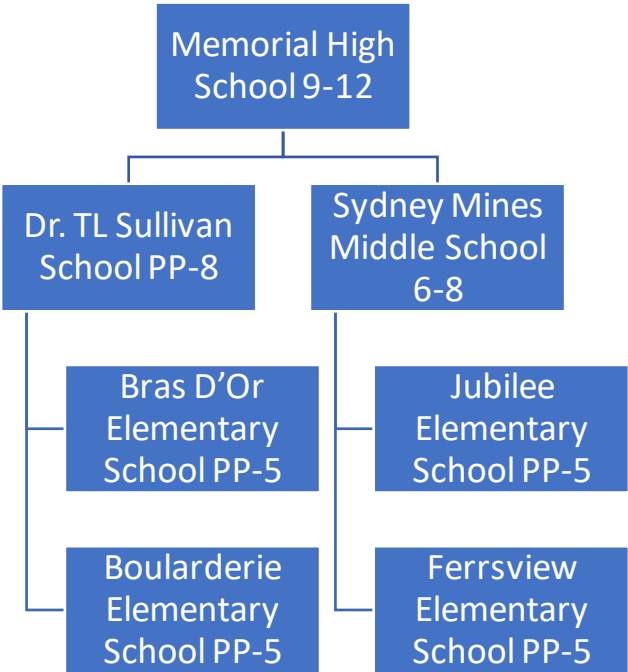
Cape Smokey Elementary											
Victoria County, NS BOC 1K0											
Grade Configuration:		PP-5									
Year of Construction:		2000									
Total Floor Area (sqft):		30573									
Number of Storeys:		1									
Number of Portables:		0									
Current School Capacity:		149									
School Utilization:		60%									
Enrollments & Projections:											
		Previous (2012-21)				Current (2022)			Projection: (2023-32)		
Year:	2012	2013	2014	2015	2016	2017	2018	2019	2020	2021	2022
Enrollment:	100	92	91	84	86	85	78	82	89	86	89
Year:		2023	2024	2025	2026	2027	2028	2029	2030	2031	2032
Enrollment:		82	79	79	76	75	69	69	73	69	72
Specific (specialized) programming offered at the school: N/A											
Provincially approved addition and alteration projects or other major capital upgrades, including dates completed (if applicable) Roof replacement and dry sprinkler replacement in 2017											
Information about review of the school previously conducted: NA											
Future considerations related to building condition:											
Exterior work includes repairs/replacing hardy board siding. Repairs/replacement of asphalt on the driveway and parking lots are recommended.											
Any other factors relevant to the school:											



North Highlands											
1363 Bay St Lawrence Rd, Cape North, NS B0C 1C0											
Grade Configuration:		PP-5									
Year of Construction:		2000									
Total Floor Area (sqft):		30573									
Number of Storeys:		1									
Number of Portables:		0									
Current School Capacity:		174									
School Utilization:		48%									
Enrollments & Projections:		Previous (2012-21)				Current (2022)			Projection: (2023-32)		
Year:	2012	2013	2014	2015	2016	2017	2018	2019	2020	2021	2022
Enrollment:	98	85	83	61	54	64	64	83	84	89	83
Year:		2023	2024	2025	2026	2027	2028	2029	2030	2031	2032
Enrollment:		85	80	78	77	69	68	71	67	67	67
Specific (specialized) programming offered at the school:											
Provincially approved addition and alteration projects or other major capital upgrades, including dates completed (if applicable) Roof replacement and dry sprinkler replacement in 2017											
Information about review of the school previously conducted: NA											
Future considerations related to building condition:											
Exterior work includes repairs/replacing hardy board siding. Repairs/replacement of asphalt on the driveway and parking lots are recommended.											
Any other factors relevant to the school:											



Northside Family of Schools



[Click here for Geographic Catchment Areas](#)

Community/Municipal Context:

The Northside area is the gateway to Newfoundland via Marine Atlantic which supports many industries including ship building and repair plus commercial/retail spaces.

The Northside area is also benefitting from major development happening in the Northside Business Park which includes a new Community Health Clinic, Long Term Care Home , and Central Laundry Facility for all CBRM hospitals.

Memorial High School											
80 Memorial Dr, Sydney Mines, NS B1V 2Y5											
Grade Configuration:		9-12									
Year of Construction:		1975									
Total Floor Area (sqft):		188562									
Number of Storeys:		3									
Number of Portables:		0									
Current School Capacity:		1382									
School Utilization:		56%									
Enrollments & Projections:		Previous (2012-21)				Current (2022)			Projection: (2023-32)		
Year:	2012	2013	2014	2015	2016	2017	2018	2019	2020	2021	2022
Enrollment:	903	844	838	1017	1004	954	895	843	768	756	791
Year:		2023	2024	2025	2026	2027	2028	2029	2030	2031	2032
Enrollment:		791	793	753	727	721	729	737	745	725	723
Specific (specialized) programming offered at the school:											
<p>Skilled Trades, Apprenticeship (Trades/Service) Program, Behavior Support Learning Centre AEP Connect</p> <ul style="list-style-type: none"> • High Needs Learning Center • Late French Immersion 9-12 											
Provincially approved addition and alteration projects or other major capital upgrades, including dates completed (if applicable)											
<p>A multi-year, multi-phased project was carried out in 2015-2016. The project phases included: Phase 1 Window/Door Replacement; Phase 2 Roof Replacement; Phase 3 Mechanical & Electrical System Upgrades; Phase 4 Lobby/Hallways/Washrooms; Phase 5 Bus Loop & Sitework; Phase 6 Sports Field.</p> <p>A phased project was carried out from 2019-2020 to recaulk all expansion joints.</p> <p>In 2023, the Cooking Lab was renovated to create a modern teaching space.</p>											
Information about review of the school previously conducted:											
Future considerations related to building condition:											
<p>Upgrades over the next 10 years include upgrades to the elevator cab and controls are needed. Emergency devices, secondary switch gears, secondary panels, AHU and the split system heat pump are to be replaced. Repairs to the domestic water distribution system, sanitary system and the sprinkler system are required, and consideration should be given to replacing or repairing the perimeter radiator unit heater and suspended heaters. A backflow preventor should also be installed.</p> <p>Exterior work includes replacing windows and overhead doors. The tar and gravel roof and skylights also need replacement. Repairs/replacement of asphalt on the driveway and parking lots are recommended.</p>											
Any other factors relevant to the school:											
A wood chip boiler was added as a renewable energy source in 2020.											



Dr T. L Sullivan School											
256 Park Rd, Florence, NS B1Y 1N2											
Grade Configuration:		PP-8									
Year of Construction:		1976									
Total Floor Area (sqft):		75467									
Number of Storeys:		2									
Number of Portables:		0									
Current School Capacity:		528									
School Utilization:		70%									
Enrollments & Projections:			Previous (2012-21)			Current (2022)			Projection: (2023-32)		
Year:	2012	2013	2014	2015	2016	2017	2018	2019	2020	2021	2022
Enrollment:	236	223	218	259	339	419	406	409	372	353	342
Year:		2023	2024	2025	2026	2027	2028	2029	2030	2031	2032
Enrollment:		352	352	361	360	380	379	385	360	338	324
Specific (specialized) programming offered at the school:											
High Needs Learning Center <ul style="list-style-type: none"> • Intensive French grade 6 • Late French Immersion 7-8 											
Provincially approved addition and alteration projects or other major capital upgrades, including dates completed (if applicable) Roof replacement, new sports field, and technology refresh. New Tech Shop, new water line, new roof from 2012-2017											
Information about review of the school previously conducted: The school was included in a school review in 2015/2016. The school remained open. Dr. T.L. Sullivan is the receiving school for Florence Elementary following the 2016 School Review Process. Florence Elementary students were accommodated at Dr. T. L. Sullivan school in September 2017. Dr. T.L. Sullivan had the French Immersion program transferred from Sydney Mines Middle School in 2016. Pre-primary was added to TL Sullivan in 2020											
Future considerations related to building condition:											
Upgrades over the next 10 years include interior improvements which include replacement of VCT flooring, hard tile flooring and washroom upgrades. Upgrades to the elevator cab and controls are needed. The fire alarm panel, main breaker and secondary switches, emergency lighting and AHUs are to be replaced. Repairs to the domestic water distribution system, sanitary sewer system and the sprinkler system are required.											
Exterior work includes replacing the sealants on exterior wall panels, as well as exterior doors and vertical sliding windows. Repairs/replacement of asphalt on the driveway and parking lots as well as concrete sidewalks are recommended.											
Any other factors relevant to the school:											



Bras d'Or Elementary											
10 Alder Point Road, Bras d'Or NS, B1Y 2K1											
Grade Configuration:		PP-5									
Year of Construction:		1989									
Total Floor Area (sqft):		38200									
Number of Storeys:		1									
Number of Portables:		0									
Current School Capacity:		264									
School Utilization:		90%									
Enrollments & Projections:		Previous (2012-21)				Current (2022)			Projection: (2023-32)		
Year:	2012	2013	2014	2015	2016	2017	2018	2019	2020	2021	2022
Enrollment:	292	300	273	219	217	223	226	222	238	256	267
Year:		2023	2024	2025	2026	2027	2028	2029	2030	2031	2032
Enrollment:		266	265	269	269	245	237	226	223	227	217
Specific (specialized) programming offered at the school: N/A											
Provincially approved addition and alteration projects or other major capital upgrades, including dates completed (if applicable): The school has undergone partial roof replacement in 2014-2015; new roof 2014 (flat roof); new shingles over foyer; and the flat roof was completed and new windows installed in 2021.											
Information about review of the school previously conducted: The school was included in a school 2016. The school remained open.											
Future considerations related to building condition:											
Upgrades over the next 10 years include replacement of VCT and vinyl sheet flooring and washroom upgrades. The fire alarm and control panels, AHU components, steam humidifiers and exhaust fans need to be replaced.											
Exterior work includes replacing the repointing the brick mortar and isolated replacement of brick units and replacing exterior doors and windows. Repairs/replacement of asphalt on the driveway and parking lots are recommended as well as repairs to concrete pavements. Replacement of the asphalt shingle and modified bitumen roof systems is also required.											
Any other factors relevant to the school:											




Boularderie Elementary											
12065 Kempt Head Road, Boularderie, NS B1X 1K4											
Grade Configuration:		PP-5									
Year of Construction:		2000									
Total Floor Area (sqft):		32500									
Number of Storeys:		1									
Number of Portables:		0									
Current School Capacity:		192									
School Utilization:		41%									
Enrollments & Projections:			Previous (2012-21)			Current (2022)			Projection: (2023-32)		
Year:	2012	2013	2014	2015	2016	2017	2018	2019	2020	2021	2022
Enrollment:	90	94	94	69	73	65	66	67	78	80	87
Year:		2023	2024	2025	2026	2027	2028	2029	2030	2031	2032
Enrollment:		91	88	87	80	78	76	73	67	68	68
Specific (specialized) programming offered at the school: N/A											
Provincially approved addition and alteration projects or other major capital upgrades, including dates completed (if applicable): Dry sprinkler replacement in 2019 and Roof replacement in 2020											
Information about review of the school previously conducted: The school was included in a school review in 2016. The school remained open.											
Future considerations related to building condition:											
Upgrades over the next 10 years include interior improvements are required which involve replacement of VCT and vinyl sheet flooring and washroom upgrades. The fire alarm control panel, exhaust fans, heat exchanger and humidifier are to be replaced as well as localized components of the AHU.											
Exterior work includes replacing roof drainage, gutter and downspouts as well as replacing the asphalt shingle roof. Repairs/replacement of asphalt on the driveway and parking lots are recommended.											
Any other factors relevant to the school:											



Sydney Mines Middle School												
596 Main St, Sydney Mines, NS B1V 2K8												
Grade Configuration:		6-8										
Year of Construction:		1959										
Total Floor Area (sqft):		41349										
Number of Storeys:		2										
Number of Portables:		0										
Current School Capacity:		342										
School Utilization:		78%										
Enrollments & Projections:		Previous (2012-21)					Current (2022)			Projection: (2023-32)		
Year:	2012	2013	2014	2015	2016	2017	2018	2019	2020	2021	2022	
Enrollment:	283	298	266	217	235	186	199	230	266	267	244	
Year:		2023	2024	2025	2026	2027	2028	2029	2030	2031	2032	
Enrollment:		239	241	255	242	236	218	215	204	195	178	
Specific (specialized) programming offered at the school:												
<p>Provincially approved addition and alteration projects or other major capital upgrades, including dates completed (if applicable) In 2007, with a decision to forgo the construction of a P-9 school to replace Sydney Mines Jr High, capital funding was provided to upgrade finishes in the school and to upgrade technology in the building. The work was completed.</p>												
<p>Information about review of the school previously conducted: Sydney Mines Middle School was permanently closed in School Review 2015/2016. It is necessary to continue to accommodate 6-8 students from North Sydney and Sydney Mines until there is a decision about a proposed new school. The new school was approved by the government in 2018.</p>												
<p>Future considerations related to building condition: Building will be permanently closed when new middle school opens.</p>												
Any other factors relevant to the school:												

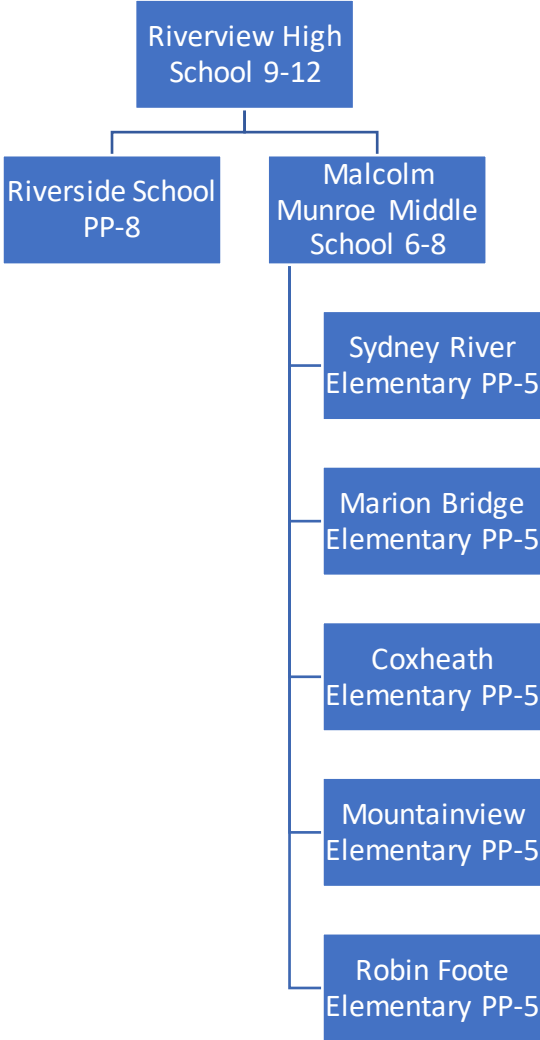


Jubilee Elementary											
755 Main St, Sydney Mines, NS B1V 2L4											
Grade Configuration:	PP-5										
Year of Construction:	2000										
Total Floor Area (sqft):	50851										
Number of Storeys:	2										
Number of Portables:	0										
Current School Capacity:	448										
School Utilization:	81%										
Enrollments & Projections:		Previous (2012-21)			Current (2022)			Projection: (2023-32)			
Year:	2012	2013	2014	2015	2016	2017	2018	2019	2020	2021	2022
Enrollment:	227	217	220	172	312	326	385	375	363	376	369
Year:		2023	2024	2025	2026	2027	2028	2029	2030	2031	2032
Enrollment:		346	327	320	307	289	291	283	277	281	278
<p>Specific (specialized) programming offered at the school: Students receiving support through Learning Support Teacher (position includes primarily a High Needs Learning Center) may have complex challenges that include, but are not limited to medical/personal care, behavioral, social/emotional, communication, and/or developmental delays.</p>											
<p>Provincially approved addition and alteration projects or other major capital upgrades, including dates completed (if applicable) Gym roof replacement in 2023</p>											
<p>Information about review of the school previously conducted: Jubilee was the receiving school for St. Joseph's Elementary that was closed in 2016 School Review.</p>											
<p>Future considerations related to building condition:</p> <p>Upgrades over the next 10 years include interior improvements which involve replacement of VCT flooring. The indirect hot water heater and emergency lighting needs to be replaced, and consideration should be given to replacing or repairing the perimeter radiators.</p> <p>Exterior work includes repoint/repair architectural block and brick work as well as exterior doors and windows. The oil tank, railings at concrete stairs and EPDM roof over the classrooms is to be replaced. Repairs/replacement of asphalt on the driveway and parking lots are recommended.</p>											
<p>Any other factors relevant to the school:</p>											

Ferrisview Elementary											
83 Archibald Ave, North Sydney, NS B2A 2W9											
Grade Configuration:		PP-5									
Year of Construction:		2010									
Total Floor Area (sqft):		38628									
Number of Storeys:		2									
Number of Portables:		0									
Current School Capacity:		373									
School Utilization:		87%									
Enrollments & Projections:		Previous (2012-21)				Current (2022)			Projection: (2023-32)		
Year:	2012	2013	2014	2015	2016	2017	2018	2019	2020	2021	2022
Enrollment:	210	217	216	196	208	212	370	353	323	313	327
Year:		2023	2024	2025	2026	2027	2028	2029	2030	2031	2032
Enrollment:		325	303	269	258	252	241	224	215	217	218
Specific (specialized) programming offered at the school: Students receiving support through Learning Support Teacher (position includes primarily a High Needs Learning Center) may have complex challenges that include, but are not limited to medical/personal care, behavioral, social/emotional, communication, and/or developmental delays.											
Provincially approved addition and alteration projects or other major capital upgrades, including dates completed (if applicable) Capital project to allow consolidated with Seton included new music room on the stage, redevelopment of tennis courts for additional parking and inclusion of pre-primary program in former music/resource space.											
Information about review of the school previously conducted: Ferrisview was the receiving school for Seton Elementary which closed in 2020.											
Future considerations related to building condition: Interior upgrades over the next 10 years include replacement of the domestic hot water heat. Exterior work includes some windows as well as the modified bitumen roofing. Repairs/repainting to brick work are required as well as identifying areas where the front façade is leaking. Repairs/replacement of asphalt on the driveway and parking lots are recommended.											
Any other factors relevant to the school:											



Riverview Family of Schools




[Click here for Geographic Catchment Areas](#)

Community/Municipal Context:

The Riverview Family of Schools is primarily located next to the Sydney Family of Schools for urban areas and benefits from many of the same type of growth happening in Sydney.

Rural areas in the Riverview Family are primarily detached homes with some planned subdivision expansions in Sydney River and Howie Center.

Riverview High School											
57 Coxheath Rd, Sydney, NS B1R 1R4											
Grade Configuration:	9-12										
Year of Construction:	1950, 1955, 1969, 2008										
Total Floor Area (sqft):	128773										
Number of Storeys:	3										
Number of Portables:	0										
Current School Capacity:	1424										
School Utilization:	71%										
Enrollments & Projections:		Previous (2012-21)				Current (2022)			Projection: (2023-32)		
Year:	2012	2013	2014	2015	2016	2017	2018	2019	2020	2021	2022
Enrollment:	961	972	899	1096	1059	1097	1062	1042	1012	934	964
Year:		2023	2024	2025	2026	2027	2028	2029	2030	2031	2032
Enrollment:		964	985	963	942	932	896	909	923	930	937
Specific (specialized) programming offered at the school:											
<ul style="list-style-type: none"> • Skilled Trades, • Discovering Opportunities • High Needs Learning Center • Late French Immersion 9-12 											
Provincially approved addition and alteration projects or other major capital upgrades, including dates completed (if applicable) In the period 2004 through 2014, considerable refurbishments were made to Riverview High through an alteration and addition project.											
A former bus garage was converted to house the Skilled Trades program in 2017.											
In 2020, a new wood fired boiler plant was added for heating, reducing GHG emissions at the site.											
Additional upgrades from 2020-21 included a new accessible ramp to the gym entrance, some brick repointing around the gym, and gym roof replacement.											
Information about review of the school previously conducted: N/A											
Future considerations related to building condition: Upgrades over the next 10 years include the replacement of VCT flooring, wood floor refinishing and washroom upgrades. Upgrades to the elevator & wheelchair lift cab and controls are needed. The fire alarm panel, main disconnect, breaker panels split system heat pump and hot water heater are to be replaced. The hot water radiators, electric heaters and AHU need to be replaced during this time frame. Repairs to the domestic water distribution system and the sprinkler system are required, and a backflow preventor should be installed. Consideration should be given to replacing or repairing the perimeter radiator unit heater and suspended heaters.											
Exterior work includes replacing the metal siding and repairs to brick and mortar as well as exterior doors and windows. The IRMA, asphalt shingle and modified bitumen roofs and roof drains require replacement during this time. Repairs/replacement of asphalt on the driveway, bus loop and parking lots are recommended as well as concrete work in the walkways and stairs.											
Any other factors relevant to the school:											

Riverside School											
7430 Hornes Rd, Albert Bridge, NS B0A 1P0											
Grade Configuration:		PP-8									
Year of Construction:		2000									
Total Floor Area (sqft):		46785									
Number of Storeys:		1									
Number of Portables:		0									
Current School Capacity:		289									
School Utilization:		79%									
Enrollments & Projections:		Previous (2012-21)				Current (2022)			Projection: (2023-32)		
Year:	2012	2013	2014	2015	2016	2017	2018	2019	2020	2021	2022
Enrollment:	169	184	166	126	124	205	213	231	229	244	250
Year:		2023	2024	2025	2026	2027	2028	2029	2030	2031	2032
Enrollment:		254	251	268	262	265	261	263	260	255	250
Specific (specialized) programming offered at the school: High Needs Learning Center											
Provincially approved addition and alteration projects or other major capital upgrades, including dates completed (if applicable) New roof completed in 2021, dry sprinkler system (attic) 2019, renovations to turn into middle school (science lab, family studies, tech lab) in 2017.											
Information about review of the school previously conducted: Riverside was the receiving school for George D. Lewis School permanently closed September 2017.											
Future considerations related to building condition: Exterior work includes repairs/replacing hardy board siding. Repairs/replacement of asphalt on the driveway and parking lots are recommended.											
Any other factors relevant to the school: Knowledge Keepers Path											



Malcolm Munroe Middle School											
125 Kenwood Dr, Sydney River, NS B1S 1T8											
Grade Configuration:		6-8									
Year of Construction:		1970									
Total Floor Area (sqft):		94200									
Number of Storeys:		2									
Number of Portables:		0									
Current School Capacity:		840									
School Utilization:		65%									
Enrollments & Projections:		Previous (2012-21)				Current (2022)			Projection: (2023-32)		
Year:	2012	2013	2014	2015	2016	2017	2018	2019	2020	2021	2022
Enrollment:	571	536	523	584	625	551	540	554	543	538	524
Year:		2023	2024	2025	2026	2027	2028	2029	2030	2031	2032
Enrollment:		520	502	491	494	516	538	532	498	491	504
Specific (specialized) programming offered at the school:											
<ul style="list-style-type: none"> • High Needs Learning Center • Intensive French (Grade 6) • Late French Immersion (Grade 7-8) 											
Provincially approved addition and alteration projects or other major capital upgrades, including dates completed (if applicable) Alteration and Addition funding enabled several improvements to Malcolm Munroe. These included a new roof, new main entrance, some flooring upgrades and connection to Municipal water.											
Recent upgrades included new concrete aprons at the school, as well as recaulking of expansion joints.											
Information about review of the school previously conducted:											
Future considerations related to building condition:											
Upgrades over the next 10 years include interior improvements are required which involve replacement of VCT flooring, washroom upgrades, refinishing the stage floor and replacing millwork in classrooms. Upgrades to the elevator cab and controls are needed. The fire alarm panel, primary and secondary electrical panels are to be replaced. Repairs to the domestic water distribution system and replacement of the water heaters, boiler and AHU are required. Consideration should be given to replacing or repairing the perimeter radiator unit heater and suspended heaters.											
Exterior work includes replacing roof mounted exhaust fans as well as the tar and gravel roof. Repairs/replacement of asphalt on the driveway and parking lots are recommended.											
Any other factors relevant to the school:											



Sydney River Elementary											
35 Phillip St, Sydney River, NS B1S 1M8											
Grade Configuration:			PP-5								
Year of Construction:			1970, 1980								
Total Floor Area (sqft):			46070								
Number of Storeys:			2								
Number of Portables:			0								
Current School Capacity:			410								
School Utilization:			52%								
Enrollments & Projections:			Previous (2012-21)			Current (2022)			Projection: (2023-32)		
Year:	2012	2013	2014	2015	2016	2017	2018	2019	2020	2021	2022
Enrollment:	299	321	320	253	235	221	215	225	215	241	260
Year:		2023	2024	2025	2026	2027	2028	2029	2030	2031	2032
Enrollment:		273	283	286	296	291	286	277	273	271	267
Specific (specialized) programming offered at the school: High Needs Learning Center											
Provincially approved addition and alteration projects or other major capital upgrades, including dates completed (if applicable) New gym roof, heating system replaced, new gym floor, washroom upgrades. New washrooms in foyer area, new windows in newer section, upgraded hallway with new coat racks, electrical panels, lighting, tiling, etc., new boilers.											
Information about review of the school previously conducted:											
Future considerations related to building condition:											
Upgrades over the next 10 years include interior improvements are required which involve replacement of VCT flooring, hard tile flooring and washroom upgrades. The fire alarm panel, primary and secondary switch gear unit and control/instrumentation system are to be replaced as well as the AHU. The sprinkler system will need to be repaired/replaced. Repairs to the domestic water distribution system and the sprinkler system are required, and consideration should be given to replacing or repairing the perimeter radiators.											
Exterior work includes replacing the sealants on exterior wall panels, replacing metal siding as well as exterior doors and windows. Repairs/replacement of asphalt on the driveway and parking lots are recommended. Replacement of the remaining roof systems is also required.											
Any other factors relevant to the school:											



Marion Bridge Elementary											
3845 Gabarus Hwy, Marion Bridge, NS B1K 1A6											
Grade Configuration:			PP-5								
Year of Construction:			1960,1989								
Total Floor Area (sqft):			11072								
Number of Storeys:			2								
Number of Portables:			0								
Current School Capacity:			120								
School Utilization:			66%								
Enrollments & Projections:			Previous (2012-21)			Current (2022)			Projection: (2023-32)		
Year:	2012	2013	2014	2015	2016	2017	2018	2019	2020	2021	2022
Enrollment:	82	80	73	63	71	72	69	68	79	82	76
Year:		2023	2024	2025	2026	2027	2028	2029	2030	2031	2032
Enrollment:		76	76	82	87	86	83	85	89	89	85
Specific (specialized) programming offered at the school:											
Provincially approved addition and alteration projects or other major capital upgrades, including dates completed (if applicable) Overall building refresh in 2015-16.											
Information about review of the school previously conducted: Marion Bridge has been placed under school review several times in the past. In the review in 2005, the school remained open. The school was also part of a 2015/2016 review and remained open.											
Future considerations related to building condition:											
Upgrades over the next 10 years include replacement of VCT flooring and washroom upgrades. The boiler and exhaust fans need to be replaced.											
Exterior work includes replacing wood and aluminum frame windows. Repairs/replacement of asphalt on the driveway and parking lots are recommended. Replacement of the modified bitumen and adhered membrane roof systems is also required.											
There is no gymnasium at this school, students are bussed to a nearby hall for phys ed.											
Any other factors relevant to the school:											



Coxheath Elementary											
30 Mt Florence St, Coxheath, NS B1R 1T8											
Grade Configuration:		PP-5									
Year of Construction:		1954, 1986									
Total Floor Area (sqft):		40867									
Number of Storeys:		2									
Number of Portables:		0									
Current School Capacity:		373									
School Utilization:		79%									
Enrollments & Projections:		Previous (2012-21)				Current (2022)			Projection: (2023-32)		
Year:	2012	2013	2014	2015	2016	2017	2018	2019	2020	2021	2022
Enrollment:	287	301	328	281	29	269	290	301	296	295	279
Year:		2023	2024	2025	2026	2027	2028	2029	2030	2031	2032
Enrollment:		273	269	278	275	266	261	261	258	256	248
Specific (specialized) programming offered at the school: N/A											
Provincially approved addition and alteration projects or other major capital upgrades, including dates completed (if applicable) Coxheath Elementary has benefitted from a TCA repair project which enabled the following to be completed: roof and window replacement, new boiler, washroom and lighting upgrades. New Wing - All painted, new coat racks (hallway), new washrooms, new windows; Old Section - 2 new washrooms, upgrade 2 washrooms, new coat racks, new lighting, re-tile upstairs floor, looking at turning swing on classroom doors (in progress)											
Information about review of the school previously conducted:											
Future considerations related to building condition:											
Upgrades over the next 10 years include interior improvements are required which involve replacement of VCT flooring and washroom upgrades. Upgrades to the elevator cab and controls are needed. The secondary electrical panels, fire pump, hot water heater, AHU are to be replaced. Repairs to the domestic water distribution system, septic/sewer and the sprinkler system are required, and consideration should be given to replacing or repairing the perimeter radiator units and electric baseboard heaters.											
Exterior work includes replacing the retaining wall, cement siding as well as exterior doors and metal framed windows. Repointing/repairs to brickwork will need to be completed. The BUR over the gym and west block and asphalt shingle roof covering and skylights will require replacement. Repairs/replacement of asphalt on the driveway and parking lots are recommended.											
Any other factors relevant to the school:											



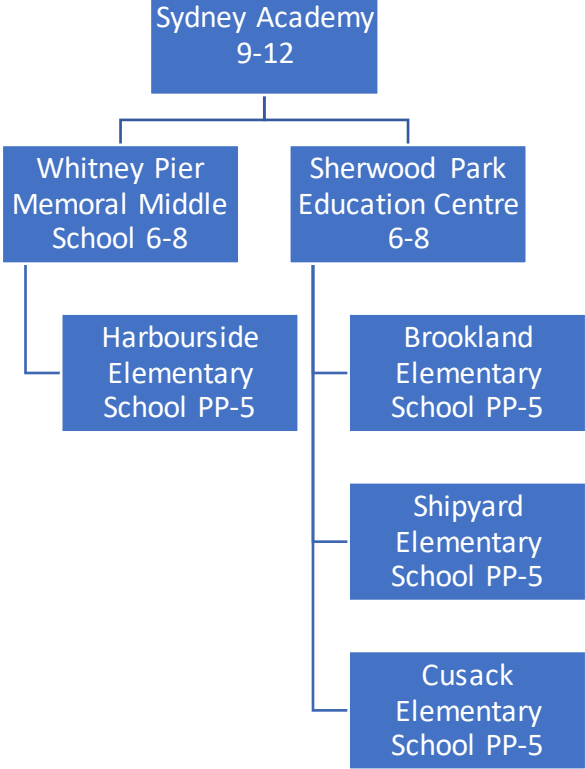
Mountainview Elementary											
21 Delta Dr, Howie Centre, NS B1L 1G9											
Grade Configuration:			PP-5								
Year of Construction:			1990								
Total Floor Area (sqft):			31630								
Number of Storeys:			1								
Number of Portables:			0								
Current School Capacity:			348								
School Utilization:			67%								
Enrollments & Projections:			Previous (2012-21)			Current (2022)			Projection: (2023-32)		
Year:	2012	2013	2014	2015	2016	2017	2018	2019	2020	2021	2022
Enrollment:	192	207	238	195	231	239	245	242	234	233	247
Year:		2023	2024	2025	2026	2027	2028	2029	2030	2031	2032
Enrollment:		251	244	268	261	268	270	267	267	269	260
Specific (specialized) programming offered at the school: High Needs Learning Center											
Provincially approved addition and alteration projects or other major capital upgrades, including dates completed (if applicable) Partial roof replacement and ventilation upgrades; new siding about gym roof; new roof on section of building (pitched section)											
Information about review of the school previously conducted: Mountainview was the receiving school for East Bay Elementary following the 2015/2016 School Review.											
Future considerations related to building condition:											
Upgrades over the next 10 years include replacement of VCT flooring and washroom upgrades. The water heater and exhaust fans are to be replaced as well as isolated components of the AHU.											
Exterior work includes replacing window perimeter sealants on exterior wall panels and repairs to CMU walls. Repairs/replacement of asphalt on the driveway and parking lots are recommended.											
Any other factors relevant to the school:											



Robin Foote Elementary											
125 Sunnydale Dr, Sydney, NS B1R 1J4											
Grade Configuration:			PP-5								
Year of Construction:			1973								
Total Floor Area (sqft):			18666								
Number of Storeys:			1								
Number of Portables:			0								
Current School Capacity:			192								
School Utilization:			61%								
Enrollments & Projections:			Previous (2012-21)			Current (2022)			Projection: (2023-32)		
Year:	2012	2013	2014	2015	2016	2017	2018	2019	2020	2021	2022
Enrollment:	152	141	131	109	111	109	108	113	117	121	129
Year:		2023	2024	2025	2026	2027	2028	2029	2030	2031	2032
Enrollment:		119	121	115	99	84	85	88	89	87	88
Specific (specialized) programming offered at the school:											
Provincially approved addition and alteration projects or other major capital upgrades, including dates completed (if applicable) Roof and windows replacement in 2017. New gym floor installed in 2019.											
Information about review of the school previously conducted: Robin Foote was placed under review in 2011. The school remained open. Robin Foote was also reviewed in 2015/2016 and remained open.											
Future considerations related to building condition:											
Upgrades over the next 10 years include replacement of VCT flooring and washroom upgrades. The AHU will need repairs/refurbishment during this time and exhaust fans are to be replaced.											
Exterior work includes repairs to the wall system and replacing aluminum framed, single glazed windows and exterior doors. Repairs/replacement of asphalt on the driveway and parking lots are recommended. Replacement of the built up roof systems is also required.											
Any other factors relevant to the school:											



Sydney Family of Schools



[Click here for Geographic Catchment Areas](#)

Community/Municipal Context:

The Sydney area has seen a significant population increase due to immigration and international students attending Cape Breton University. Additionally the new NSCC Waterfront Campus is scheduled to open in 2024.


Housing developments planned in the Sydney area include the [Tartan Downs](#) project, Cossitt Heights and Welton Street sports field development which would be in the Cusack Elementary and Sherwood Park catchments.

Sydney Academy											
49 Terrace St, Sydney, NS B1P 2L4											
Grade Configuration:			9-12								
Year of Construction:			1959, 1968, 2008								
Total Floor Area (sqft):			107804								
Number of Storeys:			3								
Number of Portables:			0								
Current School Capacity:			986								
School Utilization:			89%								
Enrollments & Projections:			Previous (2012-21)			Current (2022)			Projection: (2023-32)		
Year:	2012	2013	2014	2015	2016	2017	2018	2019	2020	2021	2022
Enrollment:	763	700	672	880	846	827	868	874	874	876	852
Year:		2023	2024	2025	2026	2027	2028	2029	2030	2031	2032
Enrollment:		855	884	902	891	868	859	856	870	899	880
Specific (specialized) programming offered at the school:											
<ul style="list-style-type: none"> • International Bacculaureate • AEP Connect • High Needs Learning Center • Integrated French (9-12) 											
Provincially approved addition and alteration projects or other major capital upgrades, including dates completed (if applicable)											
Sydney Academy underwent extensive renovations through the period 2003 to 2014. The alteration and addition project included new cafeteria, new roofing, new cladding and windows, new administration area, renovated gym, as well as extensive interior upgrades. New Tech Shop. In 2018 a project to replace the school boilers was completed.											
Information about review of the school previously conducted: NA											
Future considerations related to building condition:											
Upgrades over the next 10 years at Sydney Academy include interior improvements are required which involve replacement of VCT flooring and washroom upgrades. Upgrades to the elevator and wheelchair lift cab and controls are needed. The main switch gear (north), secondary panels, exhaust fans, the a/c package and heat pump, electric unit heaters and main electrical disconnect switch are to be replaced. Repair/replacement of the sprinkler system and emergency devices as well as the replacement of the water heaters are required. Consideration should be given to replacing or repairing the perimeter radiator unit heater and suspended heaters. Exterior work includes repairs to the foundation walls, repair/replacement to the brick walls and replacing the window sealants. The BUR roof system and modified bitumen roof also require replacement. Repairs/replacement of asphalt on the driveway and parking lots are recommended.											
Any other factors relevant to the school:											
An addition for Skilled Trades would be required to offer this program											



Whitney Pier Memorial Middle School											
199 Jameson St, Sydney, NS B1N 2P7											
Grade Configuration:			6-8								
Year of Construction:			1978								
Total Floor Area (sqft):			75211								
Number of Storeys:			4								
Number of Portables:			0								
Current School Capacity:			474								
School Utilization:			65%								
Enrollments & Projections:			Previous (2012-21)			Current (2022)			Projection: (2023-32)		
Year:	2012	2013	2014	2015	2016	2017	2018	2019	2020	2021	2022
Enrollment:	402	390	340	308	298	298	298	314	310	310	282
Year:		2023	2024	2025	2026	2027	2028	2029	2030	2031	2032
Enrollment:		265	235	256	254	272	263	270	255	245	228
Specific (specialized) programming offered at the school:											
<ul style="list-style-type: none"> • High Needs Learning Center • Intensive French (Grade 6) • Late French Immersion (Grade 7-8) 											
Provincially approved addition and alteration projects or other major capital upgrades, including dates completed (if applicable)											
In 2019, Whitney Pier received funding for extensive interior upgrades which included new lighting, classroom refresh and a new cafeteria. A new roof was installed from 2021 to 2023.											
Information about review of the school previously conducted:											
The school was included in a school review in 2015/2016. The school remained open and had been scheduled to be renovated into a P-8 school, receiving students from Harbourside Elementary. That project was cancelled when Harbourside (a P-3 school) was purchased by the Province.											
Future considerations related to building condition:											
Upgrades over the next 10 years at Whitney Pier Memorial Middle School include interior improvements which are required and involve the replacement of VCT flooring and washroom upgrades. Upgrades to the elevator cab and controls are needed. The fire alarm panel, main switch gear, secondary panels, MCC and transformers, emergency devices are to be replaced. The hot water tanks are to be replaced. Repairs to the domestic water distribution system and the sprinkler system are required, and consideration should be given to replacing or repairing the perimeter radiator unit heater and suspended heaters. Exterior work includes replacing the sealants on exterior wall panels, as well as exterior doors and windows. Repairs/replacement of asphalt on the driveway and parking lots are recommended.											
Any other factors relevant to the school:											



Harbourside Elementary											
15 Church St, Sydney, NS B1N 2R3											
Grade Configuration:	PP-5										
Year of Construction:	2000										
Total Floor Area (sqft):	75506										
Number of Storeys:	2										
Number of Portables:	0										
Current School Capacity:	597										
School Utilization:	57%										
Enrollments & Projections:		Previous (2012-21)			Current (2022)			Projection: (2023-32)			
Year:	2012	2013	2014	2015	2016	2017	2018	2019	2020	2021	2022
Enrollment:	366	379	385	339	329	325	341	354	342	340	347
Year:		2023	2024	2025	2026	2027	2028	2029	2030	2031	2032
Enrollment:		346	349	326	319	302	291	276	269	264	266
Specific (specialized) programming offered at the school:											
High Needs Learning Center											
Provincially approved addition and alteration projects or other major capital upgrades, including dates completed (if applicable)											
Information about review of the school previously conducted: Harbourside was closed in the 2016 School Review. In 2018 the decision to return Harbourside to the P3 owner was revisited and a decision made to retain the school.											
Future considerations related to building condition: Upgrades over the next 10 years interior improvements which are required and involve the replacement of VCT flooring and washroom upgrades. Upgrades to the elevator & wheelchair lift cab and controls are needed. The fire alarm panel, emergency devices and hood suppression system are to be replaced. The oil tank also requires replacement. Repairs to the domestic water distribution system, sanitary system and potential replacement of the sprinkler system are required, and consideration should be given to replacing or repairing the perimeter radiator unit heater and suspended heaters. Exterior work includes replacing the sealants on exterior wall panels, as well as exterior metal framed doors. Repairs/replacement of asphalt on the driveway, parking lots and the chain link fence are recommended. The Ballasted EPDM roof also requires replacement within the next five years.											
Any other factors relevant to the school:											

Sherwood Park Education Centre											
500 Terrace St, Sydney, NS B1P 6N1											
Grade Configuration:			6-8								
Year of Construction:			1997								
Total Floor Area (sqft):			87500								
Number of Storeys:			2								
Number of Portables:			0								
Current School Capacity:			480								
School Utilization:			64%								
Enrollments & Projections:			Previous (2012-21)			Current (2022)			Projection: (2023-32)		
Year:	2012	2013	2014	2015	2016	2017	2018	2019	2020	2021	2022
Enrollment:	299	288	337	367	372	373	323	317	306	347	381
Year:		2023	2024	2025	2026	2027	2028	2029	2030	2031	2032
Enrollment:		390	363	363	368	386	382	372	355	345	345
Specific (specialized) programming offered at the school: High Needs Learning Center											
Provincially approved addition and alteration projects or other major capital upgrades, including dates completed (if applicable) Roof and siding repairs in 2020											
Information about review of the school previously conducted: Sherwood Park was considered in a 2016 School Review and was permanently closed. The closure was to take place in September 2020. In 2018 this decision was reconsidered, and the government decided to retain Sherwood Park.											
Future considerations related to building condition:											
Upgrades over the next 10 years at Sherwood Park Education Centre include interior improvements which are required and involve the replacement of VCT flooring and refinishing the gymnasium wooden floors. Upgrades to the elevator & wheelchair lift cab and controls are needed. The fire alarm panel, emergency devices and hood suppression system are to be replaced. The boilers, oil tanks and humidification units are to be replaced. Repairs to the domestic water distribution system, sanitary system and the sprinkler system are required, and consideration should be given to replacing or repairing the perimeter radiator unit heater and suspended heaters.											
Exterior work includes replacing the sealants on exterior wall panels, as well as exterior metal framed doors and windows. Repairs/replacement of asphalt on the driveway parking lots and chain link fence are recommended. The Ballasted EPDM roof also requires replacement within the next five years.											
Any other factors relevant to the school:											




Brookland Elementary											
153 Cottage Road, Sydney NS, B1P 2E5											
Grade Configuration:		PP-5									
Year of Construction:		2004									
Total Floor Area (sqft):		60866									
Number of Storeys:		2									
Number of Portables:		0									
Current School Capacity:		398									
School Utilization:		86%									
Enrollments & Projections:		Previous (2012-21)				Current (2022)			Projection: (2023-32)		
Year:	2012	2013	2014	2015	2016	2017	2018	2019	2020	2021	2022
Enrollment:	422	412	415	313	326	324	309	352	344	362	431
Year:		2023	2024	2025	2026	2027	2028	2029	2030	2031	2032
Enrollment:		424	457	452	439	432	418	414	409	395	384
Specific (specialized) programming offered at the school: High Needs Learning Center											
Provincially approved addition and alteration projects or other major capital upgrades, including dates completed (if applicable) Following flood in 2016 reconstruction included custom built spaces for assessment office, pre-primary and small/medium group work rooms											
Information about review of the school previously conducted: The school was included in a school review in 2016. The school remained open; however, it was decided to convert Brookland to a 6-8 middle school during the School Review. In 2018 government determined this project would be cancelled and Brookland would remain as an elementary school											
Future considerations related to building condition:											
Upgrades over the next 10 years include some interior improvements which involve the replacement of VCT flooring and upgrading washrooms. Upgrades to the elevator & wheelchair lift cab and controls may be needed. The water heater will need replacing and repairs/replacement of the HVAC units are required.											
Exterior work includes replacing the sealants on exterior wall panels and windows & door with some window & door replacements. Repairs/replacement of asphalt on the driveway parking lots and chain link fence are recommended. The modified bitumen roof will also require replacement.											
Any other factors relevant to the school:											



Shipyard Elementary											
30 Mt Kemmel St, Sydney, NS B1S 3V6											
Grade Configuration:			PP-5								
Year of Construction:			2002								
Total Floor Area (sqft):			40000								
Number of Storeys:			1								
Number of Portables:			0								
Current School Capacity:			373								
School Utilization:			59%								
Enrollments & Projections:			Previous (2012-21)			Current (2022)			Projection: (2023-32)		
Year:	2012	2013	2014	2015	2016	2017	2018	2019	2020	2021	2022
Enrollment:	231	229	198	159	235	239	223	223	219	219	272
Year:		2023	2024	2025	2026	2027	2028	2029	2030	2031	2032
Enrollment:		274	276	271	276	259	253	236	230	228	228
Specific (specialized) programming offered at the school: High Needs Learning Center											
Provincially approved addition and alteration projects or other major capital upgrades, including dates completed (if applicable) Roof replacement from 2018-19											
Information about review of the school previously conducted: The school was included in a school review in 2016. The school remained open. It was the receiving school for Mira Road Elementary which closed in September 2016.											
Future considerations related to building condition:											
Upgrades over the next 10 years include interior improvements which are required, and involve the replacement of VCT flooring . Upgrades to the elevator & wheelchair lift cab and controls are needed. The fire alarm panel, emergency devices,, exhaust fans and hood suppression system are to be replaced. The boilers, oil tanks and humidification units are to be replaced. The hot water heaters, AHU's and oil tank will also need to be replaced within this time frame.											
Exterior work includes replacing the sealants on exterior wall panels, as well as windows and window sealants. Repairs/replacement of asphalt on the driveway parking lots is recommended. The Ballasted EPDM roof and shingle roof section also requires replacement.											
Any other factors relevant to the school:											



Cusack Elementary												
500 Birch Hill Dr, Sydney, NS B1P 3V9												
Grade Configuration:	PP-5											
Year of Construction:	1980, 2012											
Total Floor Area (sqft):	48377											
Number of Storeys:	2											
Number of Portables:	0											
Current School Capacity:	371											
School Utilization:	88%											
Enrollments & Projections:		Previous (2012-21)					Current (2022)			Projection: (2023-32)		
Year:	2012	2013	2014	2015	2016	2017	2018	2019	2020	2021	2022	
Enrollment:	360	354	245	311	319	316	349	338	326	349	344	
Year:		2023	2024	2025	2026	2027	2028	2029	2030	2031	2032	
Enrollment:		347	346	338	331	330	320	324	328	324	324	
Specific (specialized) programming offered at the school: High Needs Learning Center												
<p>Provincially approved addition and alteration projects or other major capital upgrades, including dates completed (if applicable) Through an approved Alteration and Addition project, a new wing was added to Cusack. The project also provided some upgrades to the original school building including a new gym floor, new boilers, and some interior work. Old section – new washrooms, hallways painted, retiled, new coat racks, lighting, office area completely redone, expanded teacher’s room, regular maintenance.</p> <p>In 2022, new ventilation units were added to the old section of Cusack.</p>												
Information about review of the school previously conducted: The school was included in a school review in 2016. The school remained open.												
<p>Future considerations related to building condition: Upgrades over the next 10 years at Cusack Elementary include interior improvements which are required and involve the replacement of VCT flooring and refinishing the gymnasium wooden floors. Upgrades to the elevator lift cab and controls are needed. The fire alarm panel, main switch gear, secondary panels and air handling units are to be replaced. The hot water tank, hot water heater, Bosch storage tank, above ground storage tank and humidification units are to be replaced. Repairs to the domestic water distribution system, septic system and the sprinkler system are required, and consideration should be given to replacing or repairing the perimeter radiators.</p> <p>Exterior work includes repairs/repainting to exterior brick, as well as exterior doors and windows. Repairs/replacement of asphalt on the driveway, chain link fence and parking lots are recommended. The IRMA and modified bitumen roofs also require replacement.</p>												
Any other factors relevant to the school:												

New Waterford Family of Schools

Breton
Education
Centre 6-12


Greenfield
Elementary
School PP-5


[Click here for Geographic Catchment Areas](#)

Community/Municipal Context:

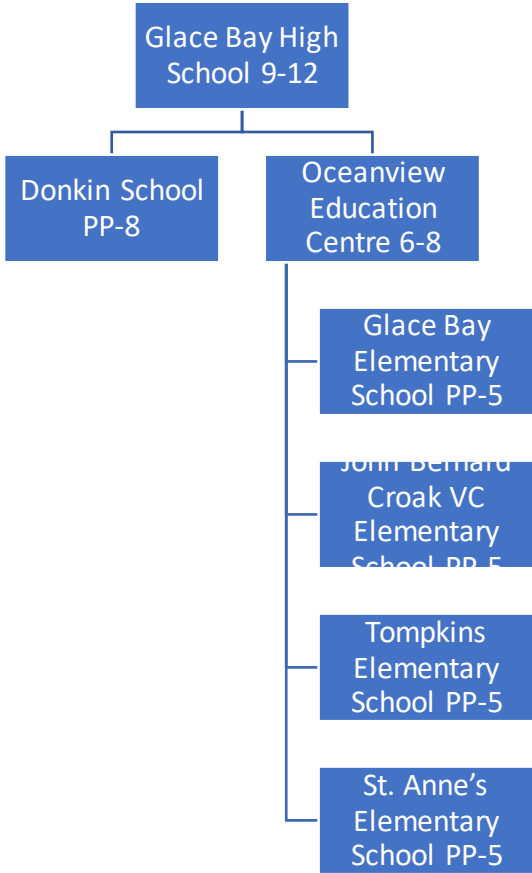
Breton Education Centre is being replaced by a new facility which will include a new school, community health centre, community wellness center and long term care facility. The new complex is known as the New Waterford Hub and the school which is in the first phase is scheduled to open in 2024.

Greenfield Elementary is benefiting from the addition of modular classrooms to address enrollment pressures. The modular classrooms will house the pre-primary program and will be open in the fall of 2024.

Breton Education Centre												
667 8 St, New Waterford, NS B1H 3T4												
Grade Configuration:	6-8											
Year of Construction:	1970											
Total Floor Area (sqft):	80000											
Number of Storeys:	4											
Number of Portables:	0											
Current School Capacity:	830											
School Utilization:	75%											
Enrollments & Projections:		Previous (2012-21)					Current (2022)			Projection: (2023-32)		
Year:	2012	2013	2014	2015	2016	2017	2018	2019	2020	2021	2022	
Enrollment :	597	587	563	644	635	611	605	591	624	592	607	
Year:	2023	2024	2025	2026	2027	2028	2029	2030	2031	2032		
Enrollment :	620	631	649	652	645	653	643	615	629	609		
Specific (specialized) programming offered at the school:												
<ul style="list-style-type: none"> • Skilled Trades • High Needs Learning Center • AEP Connect • Intensive French (Grade 6) • Integrated French (7-12) 												
Provincially approved addition and alteration projects or other major capital upgrades, including dates completed (if applicable):												
Information about review of the school previously conducted:												
Future considerations related to building condition:												
Any other factors relevant to the school: The school is being demolished in 2024 with the replacement BEC scheduled to open at this time												

Greenfield Elementary												
25 James St, River Ryan, NS B1H 1B8												
Grade Configuration:	PP-5											
Year of Construction:	2000											
Total Floor Area (sqft):	57916											
Number of Storeys:	1											
Number of Portables:	2											
Current School Capacity:	547											
School Utilization:	97%											
Enrollments & Projections:		Previous (2012-21)					Current (2022)			Projection: (2023-32)		
Year:	2012	2013	2014	2015	2016	2017	2018	2019	2020	2021	2022	
Enrollment:	369	356	341	279	465	476	524	526	529	564	578	
Year:		2023	2024	2025	2026	2027	2028	2029	2030	2031	2032	
Enrollment:		556	569	551	543	506	485	472	480	461	451	
Specific (specialized) programming offered at the school: High Needs Learning Center												
Provincially approved addition and alteration projects or other major capital upgrades, including dates completed (if applicable) Roof replacement in 2017, portable classrooms added in 2019												
Information about review of the school previously conducted: Greenfield was the receiving school for both Mount Carmel and St. Agnes. Mount Carmel and St. Agnes were closed in 2015/2016 School Review.												
Future considerations related to building condition:												
Upgrades over the next 10 years include the replacement of VCT flooring. The fire alarm control panel, pumps, exhaust units, domestic water circulation pumps and indirect storage tank (with displacement of boiler components) are to be replaced in addition to components of the AHU.												
Exterior work includes repairs to brickwork and replacing the secondary doors and windows and wall system sealants. The ballasted EPDM roof will require replacement during this time. Repairs/replacement of asphalt on the driveway, bus loop and parking lots are recommended as well as concrete work in the walkways and stairs.												
Any other factors relevant to the school: Modular classrooms being added for pre-primary in 2023												

Glace Bay Family of Schools



[Click here for Geographic Catchment Areas](#)

Community/Municipal Context:

The Glace Bay area is undergoing major redevelopment of infrastructure with a renovation to the Glace Bay hospital to include a new dialysis center and increased bed capacity. A new youth and community center is being built, as well as major retail and recreational facilities renovations.

Housing developments include New Aberdeen Revitalization Society which has space for 40 plus housing units on land provided by CBRM.

Glance Bay High	
201 Reserve St, Glance Bay, NS B1A 4W3	
Grade Configuration:	9-12
Year of Construction:	1989
Total Floor Area (sqft):	118530
Number of Storeys:	3
Number of Portables:	0
Current School Capacity:	1168
School Utilization:	72%



Enrollments & Projections:		Previous (2012-21)			Current (2022)			Projection: (2023-32)			
Year:	2012	2013	2014	2015	2016	2017	2018	2019	2020	2021	2022
Enrollment:	716	672	640	819	820	866	864	867	844	857	833
Year:		2023	2024	2025	2026	2027	2028	2029	2030	2031	2032
Enrollment:		866	846	806	771	749	751	727	759	757	728

Specific (specialized) programming offered at the school:

- Skilled Trades
- High Needs Learning Center
- AEP Connect
- Integrated French (9-12)

Provincially approved addition and alteration projects or other major capital upgrades, including dates completed (if applicable) It is a multi-year, multi-phased project which is divided into a number of phases: Phase 1 Windows, entrance systems, and envelope – Completed in September 2014; Phase 2 Skilled Trades Addition – Completed in September 2014; Phase 3 Interior improvements and security enhancement; Phase 4 Main entrance; Phase 5 Site Reconfiguration.

In 2021, a trail was completed connecting the school and commercial area, improving access and site safety.

In 2023, a project was approved for a complete roof replacement.

Information about review of the school previously conducted: N/A

Future considerations related to building condition:

Upgrades over the next 10 years at Glance Bay High School include the replacement of VCT flooring and washroom upgrades. Upgrades to the elevator cab and controls are needed. The fire alarm panel, switch gears and hot water tanks are to be replaced. Repairs to the domestic water distribution system and the sprinkler system are required, and consideration should be given to replacing or repairing the perimeter radiator unit heater and suspended heaters.


Exterior work includes replacing the sealants on exterior wall panels, replacing metal siding as well as exterior doors and windows. Repairs/replacement of asphalt on the driveway and parking lots are recommended.


The sports field requires redevelopment.

Any other factors relevant to the school:

Donkin School											
81 Centre St, Donkin, NS B1A 6N4											
Grade Configuration:		PP-8									
Year of Construction:		1964, 2007									
Total Floor Area (sqft):		43036									
Number of Storeys:		2									
Number of Portables:		0									
Current School Capacity:		240									
School Utilization:		41%									
Enrollments & Projections:		Previous (2012-21)				Current (2022)			Projection: (2023-32)		
Year:	2012	2013	2014	2015	2016	2017	2018	2019	2020	2021	2022
Enrollment:	95	90	81	79	100	100	89	91	98	117	120
Year:		2023	2024	2025	2026	2027	2028	2029	2030	2031	2032
Enrollment:		126	136	138	144	148	157	161	159	159	161
Specific (specialized) programming offered at the school: N/A											
<p>Provincially approved addition and alteration projects or other major capital upgrades, including dates completed (if applicable) In 2010, an Alteration and Addition project provided for the addition of a new gym at Donkin. An Alteration and Addition project in 2012 at Donkin School provided renewed classrooms, washrooms, hallways, and administration areas. Window replacement was also included.</p> <p>Replaced entrance system, replaced PA system (in progress), new door system – downstairs for classrooms, new lockers upstairs, regular maintenance.</p>											
Information about review of the school previously conducted: Receiving school for Gowrie which was permanently closed in 2016.											
Future considerations related to building condition:											
<p>Upgrades over the next 10 years at Donkin School include minor interior upgrades. Repairs to fire protection systems are needed and the main switch gear and secondary panels are to be replaced. Replacement of the AHUs, exhaust fans and duct heaters are required.</p> <p>Exterior work includes replacing the repointing brick work, replacing insulated panels, as well as replacing cap flashing. Repairs/replacement of asphalt on the driveway and parking lots are recommended. The EPDM roof will also require replacing.</p>											
Any other factors relevant to the school:											



Oceanview Education Centre											
60 Wallace Rd, Glace Bay, NS B1A 4N5											
Grade Configuration:	6-8										
Year of Construction:	2010										
Total Floor Area (sqft):	86000										
Number of Storeys:	2										
Number of Portables:	0										
Current School Capacity:	570										
School Utilization:	106%										
Enrollments & Projections:											
Year:	2012	2013	2014	2015	2016	2017	2018	2019	2020	2021	2022
Enrollment:	544	535	547	603	600	579	590	628	602	568	533
Year:		2023	2024	2025	2026	2027	2028	2029	2030	2031	2032
Enrollment:		483	486	508	496	497	485	492	459	426	405
Specific (specialized) programming offered at the school: High Needs Learning Center, Intensive French (Grade 6), Integrated French (Grades 7-8)											
Provincially approved addition and alteration projects or other major capital upgrades, including dates completed (if applicable) Library roof replaced in 2020 and parking lot redesigned in 2017 to improve storm water drainage											
Information about review of the school previously conducted: The school was included in a school review in 2016. The school remained open. In September 2016, the school was the receiving school for Bridgeport 6-8 students.											
Future considerations related to building condition:											
Upgrades over the next 10 years at OVEC include minor interior upgrades. Replacement of the water heater, humidifier and a/c package and heat pump are required.											
Exterior work includes the repair/replacement of expansion joints and perimeter sealants. Repairs/replacement of asphalt on the driveway and parking lots are recommended. The modified bitumen roof will also require replacing.											
Any other factors relevant to the school:											


Glace Bay Elementary											
Grade Configuration:		PP-5									
Year of Construction:		1996									
Total Floor Area (sqft):		57500									
Number of Storeys:		2									
Number of Portables:		0									
Current School Capacity:		548									
School Utilization:		68%									
											
Enrollments & Projections:											
			Previous (2012-21)			Current (2022)			Projection: (2023-32)		
Year:	2012	2013	2014	2015	2016	2017	2018	2019	2020	2021	2022
Enrollment:	506	513	506	401	403	379	407	386	375	382	374
Year:		2023	2024	2025	2026	2027	2028	2029	2030	2031	2032
Enrollment:		370	363	330	323	303	284	277	269	269	268
Specific (specialized) programming offered at the school: High Needs Learning Center											
Provincially approved addition and alteration projects or other major capital upgrades, including dates completed (if applicable) In 2013 the heating system was replaced, and former portables removed from site. In 2019, the parking lot was expanded to improve site access and safety.											
Information about review of the school previously conducted: N/A											
Future considerations related to building condition:											
Upgrades over the next 10 years at Glace Bay Elementary include interior improvements which are required, and involve the replacement of VCT flooring, washroom upgrades and refinishing the gymnasium floor. The fire alarm panel, humidifier, exhaust fans and components of the AHUs are to be replaced. Upgrades to the elevator cab and controls are needed as well as repairs to the domestic water distribution system and the sprinkler system are required. Consideration should be given to replacing or repairing the perimeter radiator unit heater and suspended heaters. The hot water tank and oil tank will also need to be replaced.											
Exterior steel doors and aluminum framed windows require replacement. Repairs/replacement of asphalt on the driveway and parking lots are recommended in addition to repairs/replacement of concrete and brick walkways. The modified bitumen roof and skylights will also require replacement during this time frame.											
Any other factors relevant to the school:											

John Bernard Croak VC Memorial School											
10 Second St, Glace Bay, NS B1A 5Z4											
Grade Configuration:		PP-5									
Year of Construction:		1974									
Total Floor Area (sqft):		36900									
Number of Storeys:		2									
Number of Portables:		0									
Current School Capacity:		289									
School Utilization:		74%									
Enrollments & Projections:		Previous (2012-21)				Current (2022)			Projection: (2023-32)		
Year:	2012	2013	2014	2015	2016	2017	2018	2019	2020	2021	2022
Enrollment:	179	191	193	145	203	189	218	212	214	204	221
Year:		2023	2024	2025	2026	2027	2028	2029	2030	2031	2032
Enrollment:		229	224	214	214	201	202	195	196	188	185
Specific (specialized) programming offered at the school:											
<p>Provincially approved addition and alteration projects or other major capital upgrades, including dates completed (if applicable) Extensive interior and exterior renovations in 2016, including windows, expansion joints, lighting and painting. Site redevelopment and roof replacement in 2019.</p>											
<p>Information about review of the school previously conducted: The school was included in a school review in 2016. The school remained open. The school was the receiving school for Bridgeport P-5 students.</p>											
Future considerations related to building condition:											
<p>Upgrades over the next 10 years include interior improvements which are required, and involve the replacement of VCT flooring and washroom upgrades. Components of the AHU will need to be replaced.</p> <p>Exterior work includes replacing the perimeter sealants, expansion joints and metal panels. Exterior steel doors and aluminum framed windows require replacement. Repairs/replacement of asphalt on the driveway and parking lots are recommended.</p>											
Any other factors relevant to the school:											



Tompkins Memorial School											
60 Main St, Reserve Mines, NS B1E 1E5											
Grade Configuration:			PP-5								
Year of Construction:			1967								
Total Floor Area (sqft):			26300								
Number of Storeys:			2								
Number of Portables:			0								
Current School Capacity:			240								
School Utilization:			84%								
Enrollments & Projections:			Previous (2012-21)			Current (2022)			Projection: (2023-32)		
Year:	2012	2013	2014	2015	2016	2017	2018	2019	2020	2021	2022
Enrollment:	148	153	148	119	222	220	204	218	201	235	234
Year:		2023	2024	2025	2026	2027	2028	2029	2030	2031	2032
Enrollment:		235	234	222	222	207	189	188	187	187	188
Specific (specialized) programming offered at the school:											
Provincially approved addition and alteration projects or other major capital upgrades, including dates completed (if applicable) In 2016, a capital project was approved to replace gym window, building siding, gym floor, and building refresh. Ground											
Information about review of the school previously conducted: The school was included in a school review in 2016. The school remained open. The school was the receiving school for students from MacDonald Elementary in 2016.											
Future considerations related to building condition: School will be permanently closed when new replacement elementary school opens.											
Any other factors relevant to the school:											



St. Anne's Elementary												
30 Official Row, Glace Bay, NS B1A 2W9												
Grade Configuration:	PP-5											
Year of Construction:	1966, 1985, 2013											
Total Floor Area (sqft):	57932											
Number of Storeys:	2											
Number of Portables:	0											
Current School Capacity:	432											
School Utilization:	64%											
Enrollments & Projections:												Previous (2012-21)
Year:	2012	2013	2014	2015	2016	2017	2018	2019	2020	2021	2022	
Enrollment:	332	307	318	270	279	267	302	299	277	281	272	
Year:		2023	2024	2025	2026	2027	2028	2029	2030	2031	2032	
Enrollment:		265	247	248	243	239	232	227	221	217	216	
Specific (specialized) programming offered at the school: High Needs Learning Center												
Provincially approved addition and alteration projects or other major capital upgrades, including dates completed (if applicable) At St. Anne's, an addition project was undertaken providing a new entrance, cafeteria, some specialty areas, as well as new classrooms. The 1966 wing was refurbished with new electrical, mechanical and new finishes. Core washroom upgrades have been completed.												
Information about review of the school previously conducted: N/A												
Future considerations related to building condition:												
Upgrades over the next 10 years include interior improvements which are required, and involve the replacement of VCT flooring and some washroom upgrades. The wheelchair lift, water heater, heat pumps, humidifier will need to be replaced. Isolated replacement of unit heaters is also required.												
Exterior work includes replacing the perimeter sealants and hardy board panels as well as the windows. Repairs/replacement of asphalt on the driveway and parking lots are recommended.												
Any other factors relevant to the school:												